

LED CEILING LIGHT PRODUCT SPECIFICATION

Product Name: LED CEILING LIGHT

Model NO.: RAVXXOLB11

12:12W
18:18W
25:25W

Customer Approval

Tested by	Checked by	Approved by

Rayven Approval

Worked by	Checked by	Approved by

Foshan Rayven lighting Co.,Ltd. specializes in manufacturing SMD and COB LED downlight, LED oyster light, LED track light, LED high bay light and other LED commercial lighting. The products have SAA, C-tick, CE, RoHS, CB, CUL, UL certificates, and strictly follow EU electrical safety standards.

With SMT production lines, six power driver production lines and lamp production assemble lines, 24 hours aging testing workshop, more than 30 professional LED engineers and technicians, We can supply more than one million energy-saving LED products to all over the world each year.



1.Feature of Rayven unframed LED Oyster ceiling light :

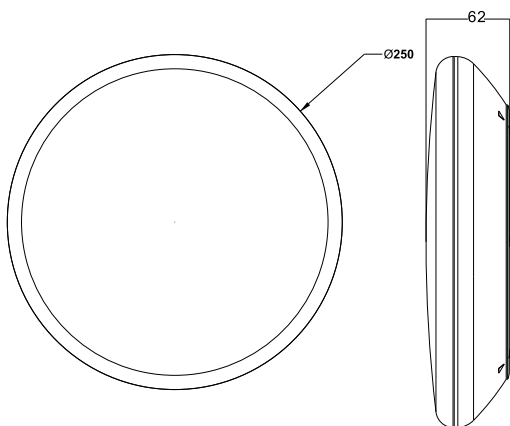
- Full range of size : 10"/12"/16"
- Power: 12W/18W/25W
- Sensor/Emergency/Sensor+Emergency(12/16")/switchable color(3000K/4000K/5000K/6000K)/Dimmable(when no sensor)
- IP54 (Extensive installation environment)
- Quick terminal(save labor cost)
- Emergency 3 hours with integrated Emergency driver

2.Application:

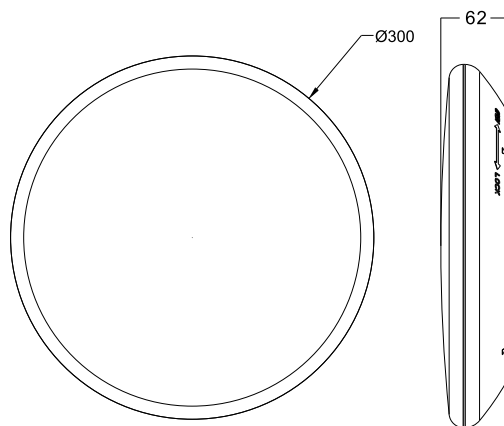
Applications: Unframed LED Oyster ceiling light is widely applied to which traditional fluorescent lamps would normally be used. It Appears that needs light, such as, banks, hotels, stores, commercial buildings, shopping malls, supermarket, underground garage&etc.

3.Physical Dimensions:

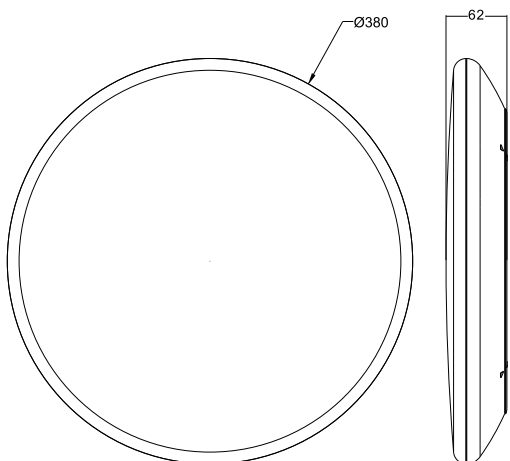
RAV12OLB11



RAV18OLB11



RAV25OLB11



4.Typical Technical Parameters:

Model	Voltage	Lumens	Power	Size			
RAV12OLB11	AC180-240V	1100-1300lm	12W	Ø250x62mm	CCT	Sensor	
RAV18OLB11	AC180-240V	1600-1900lm	18W	Ø300x62mm	CCT	Sensor	Emergency
RAV25OLB11	AC180-240V	2300-2600lm	25W	Ø380x62mm	CCT	Sensor	Emergency

5.Color Parameters:

Product Mark

Product Type :

Temperature :30'C

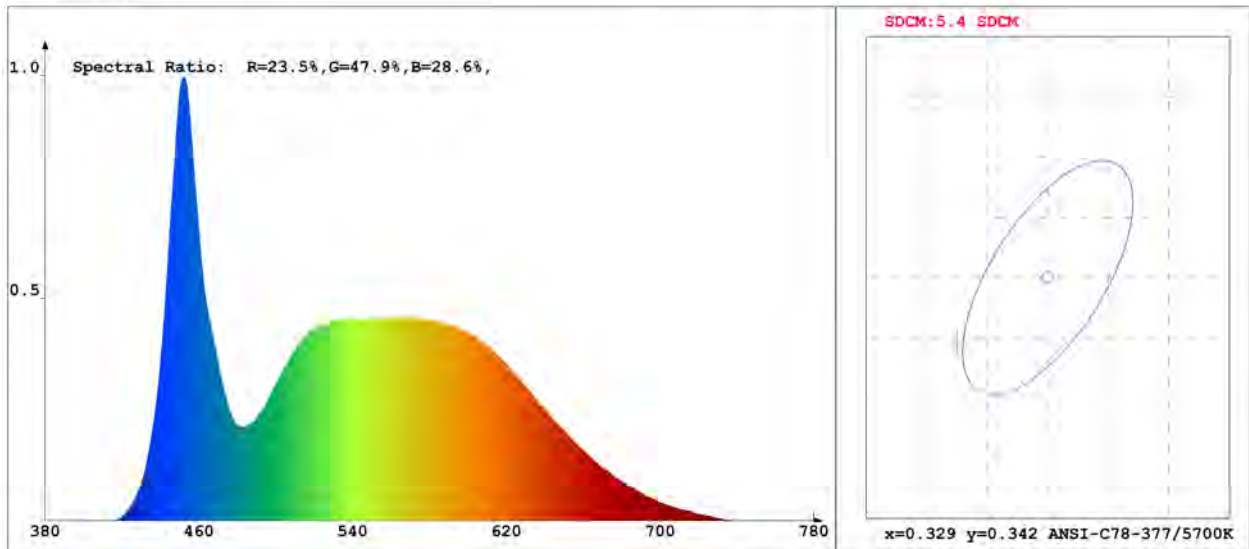
Operator :LAN

Remark:

Manufacturer :RAYVEN

Humidity :60%

Test Date :2018-05-10 11:19:17



Chroma Parameters

Chro.Coord.:x=0.3212 y=0.3363 u=0.2010 v=0.3156 duv=0.0027

CCT: 6029K Dominant Wave.:494.9nm Purity:3.9%

Flux RGB Ratio:R=14.3%,G=81.9%,B=3.8% Peak Wave:451.6nm Half Width:21.4nm

Rendering Index:Ra= 85.2

R1 =83	R2 =88	R3 =91	R4 =85	R5 =85	R6 =85	R7 =89	R8 =72
R9 =17	R10=72	R11=85	R12=58	R13=85	R14=95	R15=79	

Photo Parameters

Flux:2828.38lm

Effi.:100.7lm/W

Radiant:8691.2mW

Iv:0.0mcd

Efficiency:0.135

Effi Level:A+ (EU 874-2012)

Ele. Parameters

Voltage:U=231.200V

Current:I=0.1270A

Power:P=28.10W

Power Factor:PF=0.954

Instrument state

Instrument:Hopoo HP8000

Integral Time: 28.306ms

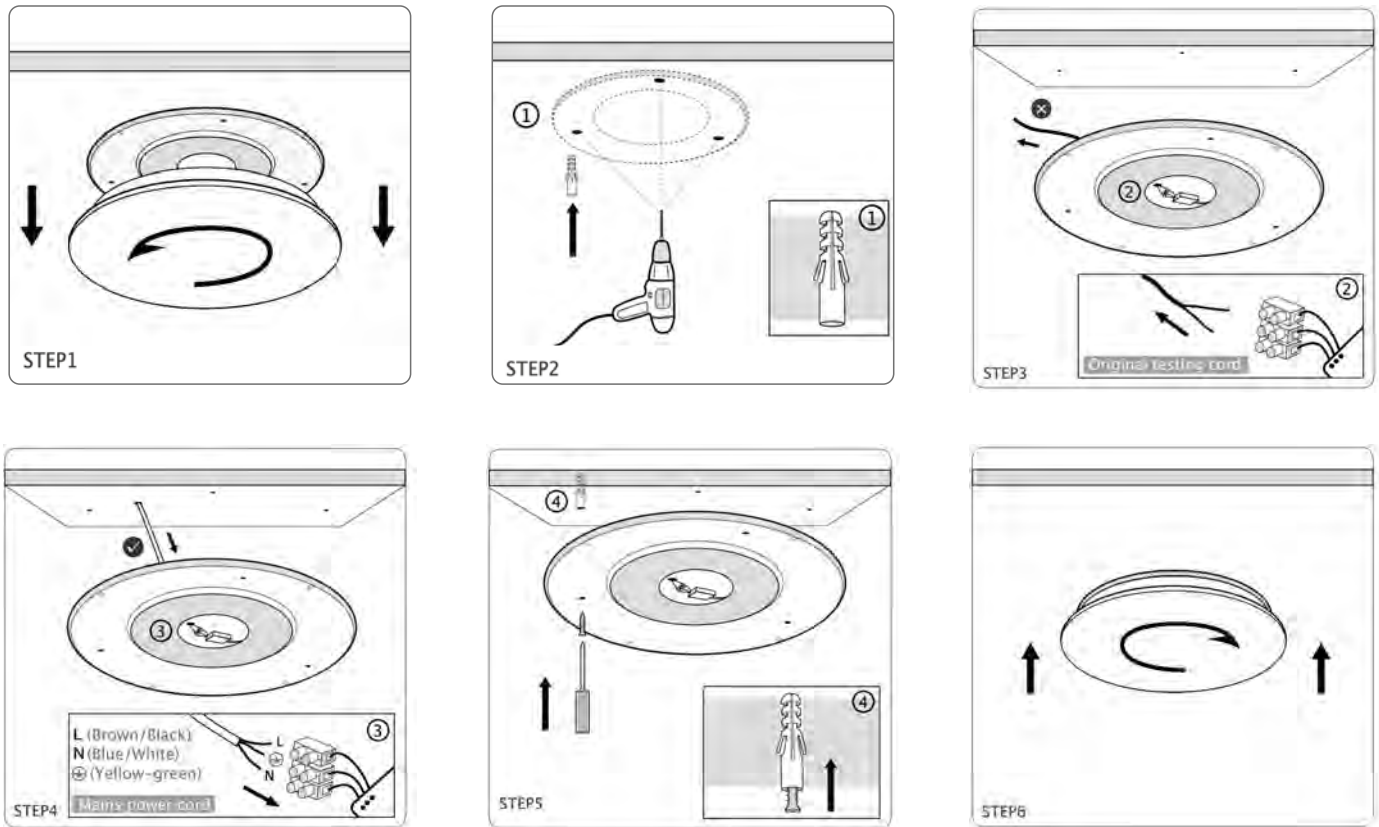
VPeak: 14991

VDark: 1234

Scan Range: 380-780nm

Product ID: 201608142

6.Installation :



Step 1: Open the lampshade by turning in counterclockwise.

Step 2: According to the 3 screw bits on the lamp, drill 3 holes in the ceiling. And then insert the plastic screw anchors into the drilling holes.

Step 3: Remove the original testing cord of the lamp by loosening the 3 crews in the wire connector of the lamp.

Step 4: Pass your power cord through the hole of ceiling lamp chassis. Then connect the Neutral Line, Live Line and Ground wire of power cord into the corresponding wiring ports of the connector.

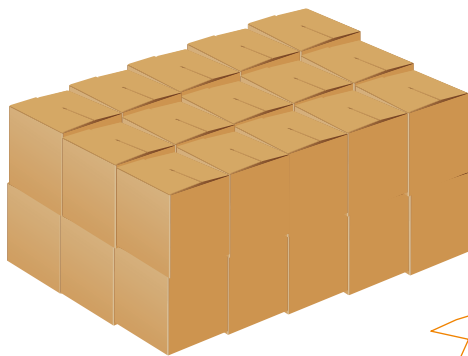
Step 5: Put 3 screws into the screw bits of lamp chassis, and then fix the lamp chassis onto the ceiling.

Step 6: Put on the lampshade to lamp chassis by turning in clockwise.

MUST BE INSTALLED BY LICENSED ELECTRICIAN

7.Packaging information

Model	Inner Cartonsize (L*W*H)mm	outerCartonsize (L*W*H)mm	Q'ty/CTN
RAV12OLB11	253*65*253mm	520*410*270mm	12/pcs/Carton
RAV18OLB11	303*62*303mm	625*325*320mm	10/pcs/Carton
RAV25OLB11	383*68*383mm	435*40*420mm	6/pcs/Carton



12pcs
10pcs
6pcs



Size:520*410*270mm
Size:625*325*320mm
Size:435*400*420mm

8.Specification



Emergency

Emergency function switched automatically between power cut and power restoration

- Li battery,high efficiency
- Battery duration:3hours
- Charge period:24hours



Sensor

Detection area:140 degree wide detective beam angle with 8 meters distance.

PS:

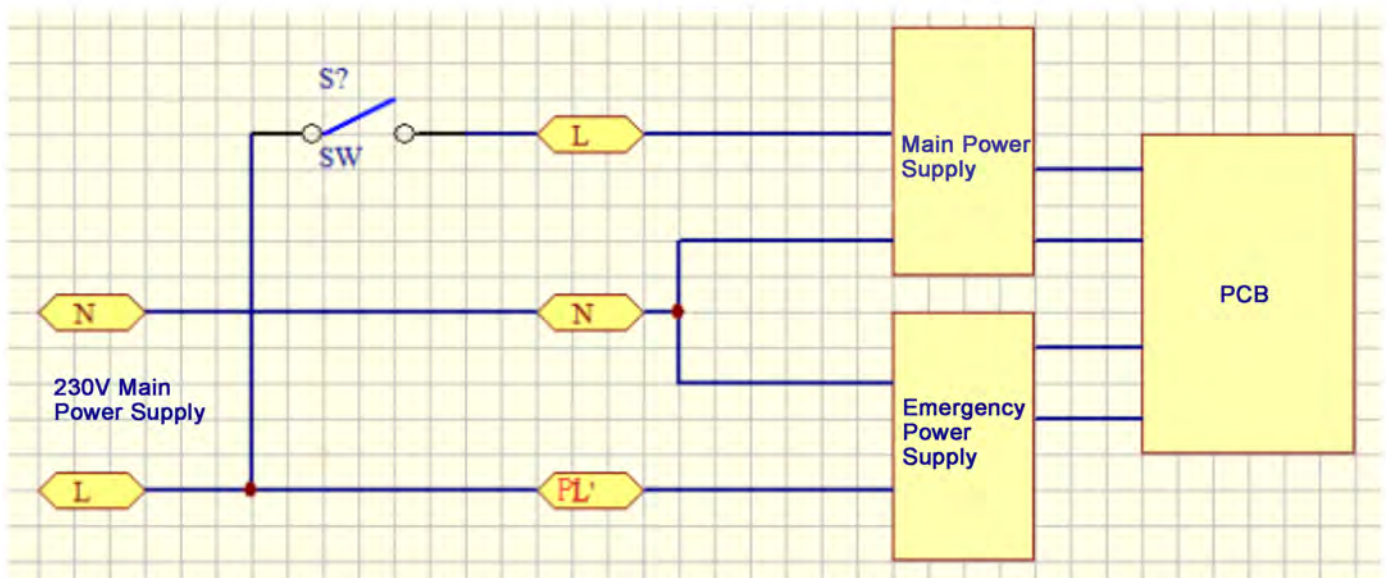
*Emergency function model cable connection as follow:

Model 1. If you want to make the lighting fixture to light on automatically, please just connect with L & N directly. When power off or turn off the light, the emergency battery will working.

Model 2. If you want to make the emergency battery working only when power off, please connect with the PL & N.



Below is the electrical diagram for your references.



* sensor function:

This sensor is equivalent to a sports switch. When people close to the light, it will turn on, and people go away for a while, it will turn off. At the same time, if there is enough light around (more than the preset value), when people come, but the light won't turn on. Default setting is as follows, detect distance is 8 metres; when surrounding is less than 30Lux, it will light on last 10 seconds.